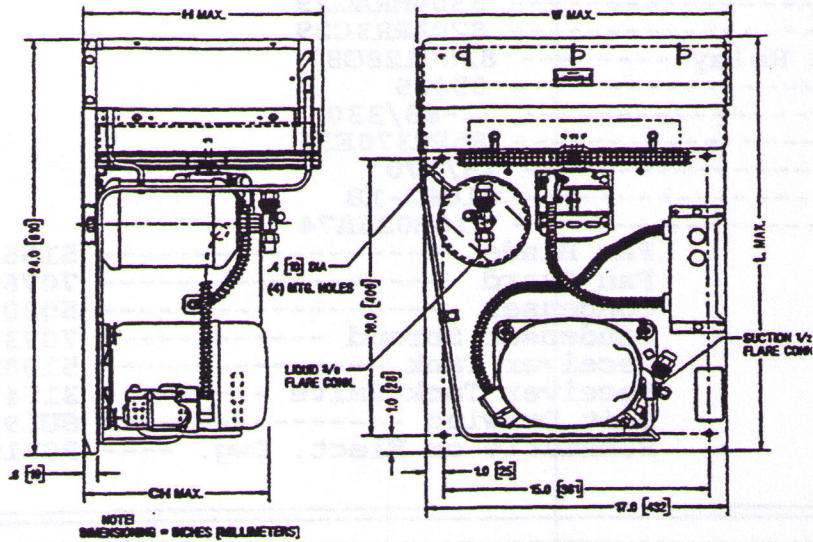




# TECUMSEH HERMETIC CONDENSING UNITS

Date: 9-6-95

MODEL AKA9470EXDXC (Formerly AK9470EC) R-22 1 HP AIR COOLED



NOTE  
DIMENSIONS IN INCHES (MILLIMETERS)

Model	Dimensions				*Line Connection		Pumpdown 90° F 90% Full	Air CFM	Oil Chg oz.	Gr. Wt. Lbs.
	L	W	H	CH	Suct.	Liq.				
AKA9470EXDXC	24.3	18.0	14.0	8.8	1/2 F	3/8 F	7.0#	600	15	84

\*F=Flare, S=Solder, RF or RS= Rotolock Valve with Flare or Solder Connections  
Factory charge: 20 psig nitrogen - **MUST BE EVACUATED** 60 HZ Performance

Approved Evap. Range		Ambient								
		90° F			100° F			110° F		
°F	PSIG	BTUH	Watts	Head	BTUH	Watts	Head	BTUH	Watts	Head
-10	16.5	3200	8300	195	2800	830	220	—	—	—
-5	20.0	3800	870	195	3300	800	220	3000	890	245
0	24.0	4300	920	200	3800	9300	225	3500	940	250
5	28.2	5000	970	205	4500	990	230	4000	1000	255
10	32.8	5600	1020	210	5100	1040	235	4600	1060	265
15	37.7	6300	1070	220	5700	1090	245	5300	1120	270
20	43.0	7000	1130	225	6400	1150	255	5900	1180	280
25	48.8	7800	1180	235	7100	1210	260	6500	1240	290
30	54.8	8500	1240	245	7800	1270	270	7200	1310	300
35	61.5	9300	1290	255	8600	1330	280	7900	1390	310
40	68.5	10100	1360	265	9300	1400	290	8600	1450	320
45	76.0	10900	1430	275	10100	1480	300	9300	1530	330

Return gas temp. 20° F max superheat above 20° F evap.  
40° F max below 20° F evap. 5° F subcooling

**SPECIFICATIONS**

**AKA9470EXDXC**

Nominal Voltage -----	230/208-60-1
Unit Bill of Material -----	2A1180-1
Voltage Range -----	253 to 187
Minimum Circuit Ampacity -----	7.7
Max. Fuse Size (Amps) -----	15
Compressor Model -----	AKA9462EXD
Bill of Material -----	AK166ET-035-P2
RLA/LRA -----	5.5/31.0
Integral Relay Box -----	AE1197-029A
Overload -----	8300MRAG29
Relay -----	820ARR3C29
Alternate Relay -----	8200128G87
Cap. Start -----	85685
Rating -----	72-88/330
Cap. Run -----	85PR370E36
Rating -----	15/370
Fan Motor -----	81062-1B
Alternate -----	810E026A74

Fan Blade -----	51563
Fan Guard -----	70769-6
Condenser -----	50802-6
Condenser Shroud -----	70736-1
Receiver Tank -----	51081
Receiver Tank Valve -----	31547
Unit Drawing -----	SU1909-20
Schematic or Elect. Dwg. -----	90719-1

